

Flare Scholar Program 2026

Program Co-Lead:

Jon George

jon@flarecapital.com

Program Administrator:

Taylor Robbins

taylor@flarecapital.com

Program Co-Lead:

Alyssa Tsenter

alyssa@flarecapital.com

About Us

About Flare Capital Partners

Flare Capital Partners is the leading healthcare venture capital firm advancing innovation-driven companies to improve positive health outcomes, broaden care access, and lower healthcare costs. We partner with exceptional founders solving healthcare's hardest challenges, supporting each with our deep sector expertise, unparalleled industry resources, and proven access to commercial opportunities. Our team of established investors and senior operating executives has invested in 50+ companies and has nearly \$1 billion in assets under management. To learn more about Flare Capital Partners, please visit [our website](#) or follow us on [LinkedIn](#) (Flare Capital Partners) and [X](#) (Twitter) @flarecapital.

Overview

Flare Scholar Program

Our annual professional development program designed for aspiring healthcare leaders, technologists, and mid-career executives.

446 of the industry's rising **founders, operators, innovators,** and **investors.**



One Community, Three Pathways

We are seeking **highly ambitious, curious, and intrinsically driven** individuals with a demonstrated interest in pursuing a career in the healthcare technology industry.

Academic

- **Currently enrolled in MBA, MD, MPH, PhD, MS-E, or other** graduate school program
- Option to engage in one project in the topic/area of interest alongside the Flare Capital team, and ownership of Flare Capital programming and events on your campus

Industry

- **Early to mid-career executives from leading healthcare companies** strategically linked to Flare Capital LP
- Willing to serve as a liaison between Flare Capital and industry sponsor/employer regarding joint initiatives, company introductions, and other collaboration opportunities

Technical

- **Early to mid-career technical and product contributors** at leading tech organizations
- Passion for and a background in AI/ML research, technology, and applications directly impacting the field of healthcare and life sciences

Flare Scholar Class of 2025

A growing community of 446 rising stars across the world's leading graduate programs and healthcare institutions



AADHAR SHAH
Medable



ABBY MILLOY
carelon



AKASH PAREKH
Wharton
UNIVERSITY OF PENNSYLVANIA



ALEX ROWLAND
PARKVIEW
HEALTH



ALEXANDRA MACKIE
London
Business
School



ALYSSA STAPPER
Dana-Farber
Cancer Institute



AMNA ALI
Medtronic



ANDREW COHEN
AMGEN



ANDREW GRANATSTEIN
Banner Health



ANGELICA HERRERA
UPMC
LIFE CHANGING MEDICINE



ARJUN PRAKASH
HARVARD
BUSINESS
SCHOOL



ARMAAN SINGH
THE UNIVERSITY OF
CHICAGO



BEN KILL
Allina Health



BRYAN KOCH
Florida
Blue



CAROLINE KEGERREIS
BlueCross BlueShield
of North Carolina



CAROLYN ZHOU
Wharton
UNIVERSITY OF PENNSYLVANIA



CHRISSY FOO
Wharton
UNIVERSITY OF PENNSYLVANIA



CHRISTA STYRKOWICZ
Oak St.
Health



DAKOTA HANSEN
Intermountain
Health



DANIELLE FRICKE
Cincinnati
Children's



ENE ANTEYI
Georgia Institute
of Technology
MOREHOUSE
SCHOOL OF MEDICINE



ERIC SHAN
Penn Medicine



ERIN BYERS
ADVOCATE HEALTH



GAUTAM CHERBOLU
Kellogg
School of Management



GERALYN LAM
Kellogg
School of Management



HALLIE HORVATH
HARVARD
BUSINESS
SCHOOL
HARVARD
UNIVERSITY



JACOB IOFFE
Cornell University



JANET YIM
CHICAGO BOOTH



JASMIN JOHNSON
HARVARD
BUSINESS
SCHOOL



JASMINE BISHOP
MedStar Health



JAY GUPTA
Baylor
School of Medicine



JENNY SORIANO
Atlantic
Health System



JEREMY SHERMAN
CHARTIS



JOHN SYME
Kellogg
School of Management



JUSTIN AGUADO
CVS
Health



KATIE HALL-PAULK
CVS
aetna
Health



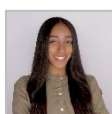
KAYLA HEINY
Tuck
at Dartmouth



KIMBERLY CHEN
STANFORD
BUSINESS



LAURA RAFFERTY
DUKE
THE FLOUZA
SCHOOL OF BUSINESS



LEILA DAWSON
HARVARD
UNIVERSITY
STANFORD
BUSINESS



LIZZIE KETTLEWELL
Humana



MACLAINE LEHAN
Point32Health



MADDIE MIHALIK
Cleveland
Clinic



MASHA FEINGOLD
HARVARD
BUSINESS
SCHOOL



MATT MUNDY
FRESENIUS
MEDICAL CARE



MAX PROEBSTLE
AdventistHealth



NANCY WOO
Blue Pelican



NEEL VALLURUPALLI
NYU



NICHOLAS SPELLER
WashU



NICOLAS BERZIN
MIT
MANAGEMENT
SLOAN SCHOOL



ORDY GNEWOU
COX
ENTERPRISES



PHILIP FREEBURG
Humana



PRANAV BALAN
transcarent



REBECCA SOSTEK
MIT
MANAGEMENT
SLOAN SCHOOL



ROHAN JOHAR
Yale SCHOOL OF
MANAGEMENT



SHAM FIRDAUSI
Yale



SOFIE YANG
HARVARD
BUSINESS
SCHOOL



SOPHIA MAMILLI
novo
holdings



TAYLOR GEBHARDT
DUKE
THE FLOUZA
SCHOOL OF BUSINESS



TEJ MEHTA
MIT
MANAGEMENT
SLOAN SCHOOL



TREY LUNDMARK
novo
holdings



VICTOR LEI
Point32Health



VIKAS GHAYAL
Artisight



VIKKI WALSH
labcorp



VINAY RAJ
The Moonshot
Factory



WILL MCBRIAN
SEMPRE
HEALTH



WINNA WU
Boston
Children's
Hospital
Let's every child's well

Flare Scholar Alumni Network

446 Flare Scholars & Alumni in total from leading graduate programs and healthcare institutions...

...who have gone on to hold **founding, operating, and investing** roles at top industry organizations

Academic



Industry



Healthtech Founders (39+)



Portfolio Companies (27+)



Partners & Leading Orgs



VC Firms & Studios (41+)



Flare Scholar Alumni Network: By the Numbers

39

Founders

8

C-Suite
Executives

41

Investors
(5 at Flare Capital)

50

Healthcare
Providers

15

Board Members and
Advisors

34

Flare Scholar Ventures
Pre-Seed Investments

27

Flare Scholars at
Flare Portfolio
Companies

250+

Healthcare Orgs
Represented

\$147M

Capital Raised by
Flare Scholar Ventures
Pre-Seed Companies



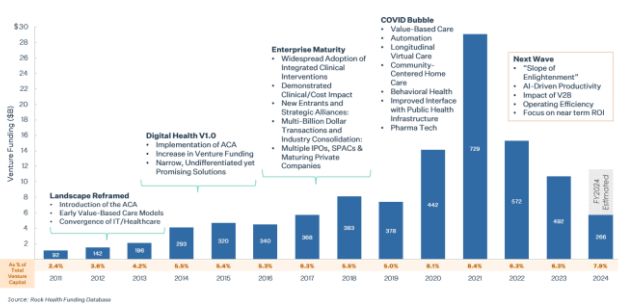
*Data as of August 1, 2025, and is sourced from Flare internal data records and publicly available information.

Core Curriculum

Attend **planned webinars** on a range of healthcare and VC topics

1 Flare investment pillars and healthcare trends

Healthcare IT Investment Activity



2 Deal sourcing and due diligence

	% of total
1 Lead Opportunity comes to investment team's attention	100.0%
2 First Meeting Initial call or meeting	35.7%
3 Partners Meeting Has met full partnership	4.4%
4 Diligence Partnership voted, issues-driven diligence roadmap	2.0%
5 Negotiate Terms Delivered term sheet and negotiating investment	0.7%
6 Investments Signed term sheet, initial investment made	0.5%

3 Working with portfolio companies

In-person and virtual comprehensive primary care and metabolic health services

On-site care coordination of healthcare resources to residents of low-income housing developments

Multi-payer, telepsychiatry platform focused on expanding access to BH services for seniors with SMIs

Provider credentialing and workforce management automation platform

4 Deal structure and financing instruments

CAPITALIZATION TABLE

	CURRENT CAPITALIZATION					PRO FORMA CAPITALIZATION				
	Common Stock	Stock Options	Fully Diluted (FD) Shares	FD Ownership		Common Stock	Stock Options	Series A Preferred	FD Shares	FD Ownership
Founder	\$ 150,000	150,000	475,000	52%		425,000	-	-	425,000	31%
Employees	-	-	125,000	10%		125,000	-	-	125,000	6%
Angel Investors	350,000	350,000	-	29%		350,000	-	-	350,000	18%
Unallocated Pool	-	-	100,000	8%		-	400,000	-	400,000	20%
Rare Capital	-	-	-	-		-	-	300,000	300,000	15%
Series A Investor	-	-	-	-		-	-	200,000	200,000	10%
Total	\$ 500,000	500,000	700,000	100%		1,100,000	400,000	500,000	2,000,000	100%

Reflects current capitalization of the company assuming conversion of LLC structure to a c-corporation. Member units to common stock/options at a 1-for-1 conversion rate.

Unallocated pool at 20% post-closing included in pre-money valuation

\$15M pre money = Series A at \$10/share (\$15M/1.5M shares)

Opportunities to Engage with Industry Leadership

Partner with Flare Capital investors to tackle **Flare Scholar projects** and industry events

Thought Leadership

Co-author an article in a health-tech publication

Dispelling The Myths Hindering
Medicaid Innovation

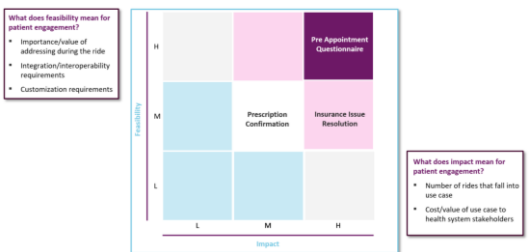
David Velasquez, Dan Gebremedhin

JANUARY 4, 2024



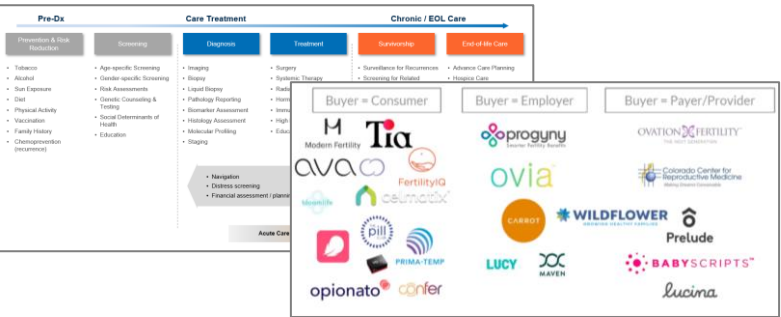
Portfolio Companies

Work with a portfolio company on a bite-sized project



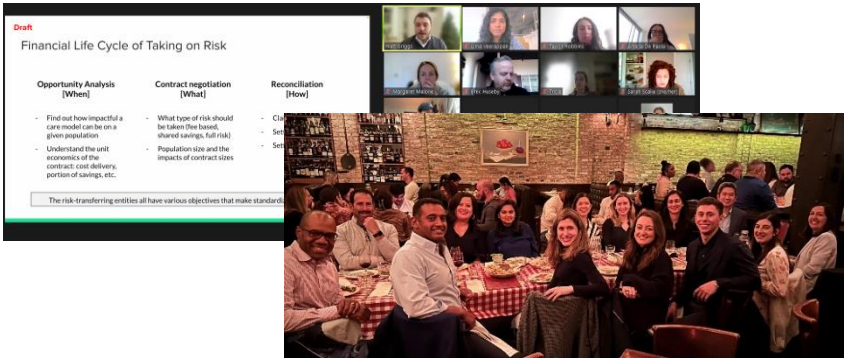
Market Sector Analysis

Develop an investment thesis on a topic of interest



Lead Various Industry Events

Host Lunch & Learns, Virtual Interest Groups, and City Events



Participate in Flare Scholar Ventures

Flare Scholar Ventures is an initiative to provide \$100k of pre-seed or seed capital to back companies that are founded, advised, or supported directly by Flare Scholars.

34 Companies Since 2020



Investment Process

1. Flare Scholars can recommend companies actively raising capital for potential investment.
2. The sponsoring Flare Scholar(s) and management team pitch the opportunity to the Flare Scholar Ventures group, followed by Q&A and a collective vote.
3. If a favorable vote, opportunities are presented to Flare Capital investment team, with the final evaluation and decision made by the partnership.

\$147M
In Capital Raised
by FSV Companies

**1 companies currently in Stealth/unannounced*

Why Apply?

The Flare Scholar program supports rising leaders to find the right pathways throughout their entrepreneurial, academic, and career journey.



Master key functional areas by learning from established investors

- ✓ Supports candidates to understand the fundamentals and increase readiness for opportunities related to early-stage healthtech.



Gain confidence by tapping deep industry-specific expertise

- ✓ Through previously mentioned structured and unstructured opportunities.



Expand networks alongside the highest caliber peers

- ✓ Build meaningful relationships and tap the breadth and depth of the Flare Capital network. Our network is your network.



Access mentorship for career impact today and tomorrow

- ✓ As part of the program, Academic Scholars are directly paired 1:1 with an experienced mentor for coaching, guidance, and career support.

Applications Open

September 8 – October 19, 2025

Become part of the growing community of Flare Scholars – 446+ of the industry's rising founders, operators, investors, and innovators.

Follow Flare Capital Partners on [LinkedIn](#) for more updates